

Recombinant Phospho-Syk (Tyr525/526) Monoclonal Antibody

catalog number: AN301315L

Note: *Centrifuge before opening to ensure complete recovery of vial contents.*

Description

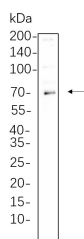
Reactivity	Human;Mouse;Rat
Immunogen	A synthetic peptide corresponding to residues around (Tyr525/526) of Human Phospho-Syk
Host	Rabbit
Isotype	IgG, κ
Clone	B1078
Purification	Protein A
Buffer	PBS, 50% glycerol, 0.05% Proclin 300, 0.05% protein protectant.

Applications

Recommended Dilution

WB	1:2000-1:10000
IF	1:200-1:1000
ELISA	1:5000-1:20000
IP	1:50-1:200

Data



Western Blot with Recombinant Phospho-Syk (Tyr525/526) Monoclonal Antibody at dilution of 1:1000 dilution. Lane A: Ramos cell lysate.

Observed-MW:72 kDa

Calculated-MW:72 kDa

Preparation & Storage

Storage	Store at -20°C Valid for 12 months. Avoid freeze / thaw cycles.
Shipping	Ice bag

Background

This gene encodes a member of the family of non-receptor type Tyr protein kinases. This protein is widely expressed in hematopoietic cells and is involved in coupling activated immunoreceptors to downstream signaling events that mediate diverse cellular responses, including proliferation, differentiation, and phagocytosis. It is thought to be a modulator of epithelial cell growth and a potential tumour suppressor in human breast carcinomas. Alternatively spliced transcript variants encoding different isoforms have been found for this gene.

For Research Use Only